

1020L POWER AMPLIFIER

200 Watts RF Power For:

- Medical
- Industrial
- Laboratory Applications



Featuring:

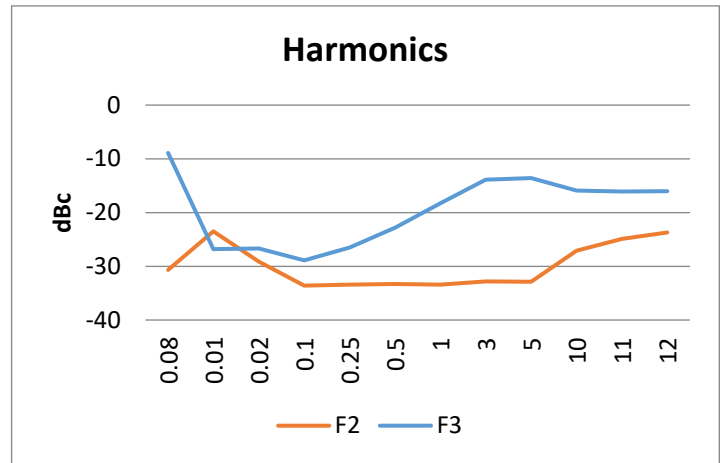
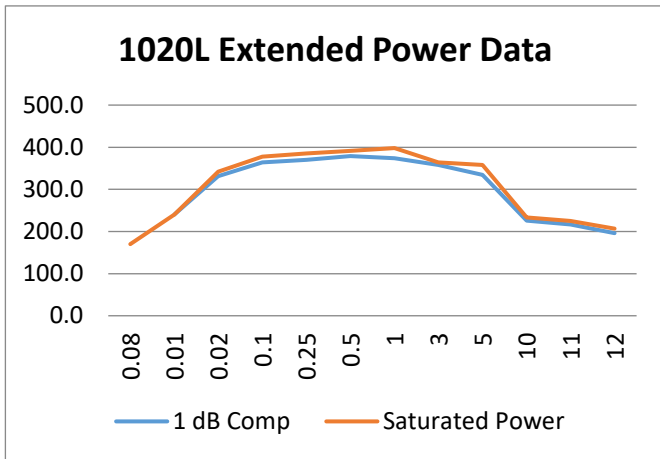
- 10 KHz – 5 MHz
- Power Measurement
 - Forward & Reflected
- Solid State Reliability
- Forced Air Cooling



E&I 1020L Specifications*	
Class of Operation:	Class AB
Frequency Coverage:	10 KHz – 5 MHz
Rated Power:	200 Watts P1dB Compression
Saturated Power:	300 Watts from 30 KHz – 4 MHz
Power Gain:	53 dB nominal
Gain Flatness:	+/- 1.5 dB
Harmonic Level:	< -13 dBc
Input Power for Rated Pout:	0 dBm (1 mW)
Input Impedance / VSWR:	50 Ω / 1.5:1 maximum
Output Impedance / VSWR:	50 Ω / 2:1 maximum
Ruggedness:	∞:1 VSWR
Protection:	Unit will withstand input signal of +13 dBm without damage. Overdrive limit 300 Watts. Reverse power limit 225 Watts.
AC Input:	100 – 240 VAC 47 – 63 Hz 4.5 A @ 120 V 2.25 A @ 240 V
Temperature Range:	0° – 45° C
Cooling:	Forced Air
Dimensions (H x W x D):	5.12 x 16.5 x 20 inches 130 x 420 x 508 mm
Weight:	32.5 lbs (14.7 Kg)
Connectors:	BNC
Rack Mounting:	Optional
RF Input Signal:	AM, FM, SSB, Pulsed



1020L POWER AMPLIFIER



Protection:

- Software Overdrive Limit: 300 Watts
- Software Reverse Power Limit: 225 Watts

Performance into 50 ohms

Input				Amplifier Gain Nominal dB	Output			
Input Power Watts	dBm	V p-p Volts	V rms Volts		Output Power dBm	Watts	V p-p Volts	V rms Volts
0.000250	-6.02	0.32	0.11	50	43.98	25.00	100.00	35.36
0.0010	0.00	0.30	0.22	50	50.00	100.00	200.00	70.71
0.0020	3.02	0.89	0.32	50	53.02	200.22	283.00	100.06
0.0023	3.52	0.95	0.34	50	53.52	225.00	300.00	106.07



Electronics & Innovation, Ltd.
 150 Research Blvd.
 Rochester, NY 14623
 Tel: 585-214-0598 Fax: 585-214-0580
www.eandiltd.com